

# PicFlash

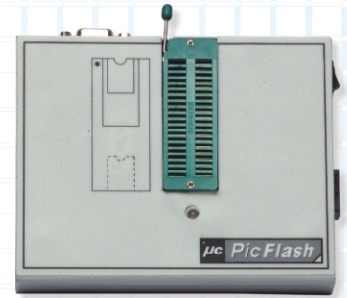
## Specialized IC Programmer for PIC MCU's / I2C EEPROM's

High on Features - Low on Cost.

The PicFlash Programmer is an affordable, reliable, and fast production grade programmer for PIC 12, 16 & 18 series Flash, OTP Microcontrollers and 24Cxx I2C EEPROM's\*.

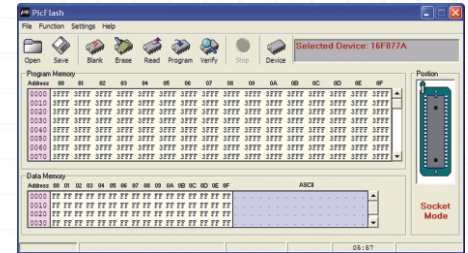
### Hardware Features

- Single 40 Pin ZIF for 8 to 40 Pin Devices.
- \* RS232 Serial Port Interface.
- Programmer firmware update through computer.
- Programmer hardware verifies IC's at 3 different voltage levels after programming for improved reliability.
- ISP programming supported.



### Software Features

- Automatic device identification before programming.
- Supports all operations program, verify, blank check, read, secure, erase & so on.
- Auto Batch Program function for faster programming i.e. Mass Production mode.
- User-friendly interfaces with pull-down menus, pop-up dialogue box and help.
- Works on all windows platform 95/98/2000/XP.
- Supports Intel (linear & segmented) HEX (INHX8M).
- Auto execution of multiple functions.
- Easy to use integrated HEX Editor on main software window.
- Device insertion test.
- Support for programming only a selected memory in the microcontroller e.g. Code memory, Data memory or configuration memory.



### Devices Supported

|                        |         |          |         |         |         |
|------------------------|---------|----------|---------|---------|---------|
| 12F508                 | 12F509  | 12F629   | 12F675  | 16F630  | 16F676  |
| 16C83                  | 16C84   | 16F627   | 16F627A | 16F628  | 16F628A |
| 16F648A                | 16F83   | 16F84    | 16F84A  | 16LF627 | 16LF628 |
| 16LF648A               | 18F1220 | 18F1320  | 16F72   | 16F73   | 16F737  |
| 16F76                  | 16F767  | 16F870   | 16F872  | 16F873  | 16F873A |
| 16F876                 | 16F876A | 18F242   | 18F248  | 18F252  | 18F258  |
| 18F2220                | 18F2320 | 18F2439  | 18F2539 | 16F74   | 16F747  |
| 16F77                  | 16F777  | 16F871   | 16F874  | 16F874A | 16F877  |
| 16F877A                | 18F442  | 18F448   | 18F452  | 18F458  | 18F4220 |
| 18F4320                | 18F4439 | 18F4539  |         |         |         |
| 12C508                 | 12C508A | 12C509   | 12C509A | 16C505  | 16C61   |
| 16C620                 | 16C620A | 16C621   | 16C621A | 16C622  | 16C622A |
| 16C71                  | 16C71A  | 16C710   | 16C711  | 16C712  | 16C716  |
| 16CE623                | 16CE624 | 16CE625  | 16CR83  | 16CR84  | 16C62   |
| 16C62A                 | 16C62B  | 16C63    | 16C63A  | 16C66   | 16C66A  |
| 16C72                  | 16C72A  | 16C73    | 16C73A  | 16C73B  | 16C745  |
| 16C76                  | 16C773  | 16C64    | 16C64A  | 16C65   | 16C65A  |
| 16C65B                 | 16C67   | 16C74    | 16C74A  | 16C74B  | 16C765  |
| 16C77                  | 16C774  |          |         |         |         |
| <b>SERIAL EEPROM's</b> |         |          |         |         |         |
| 24C01                  | 24C01A  | AT24C01A | 24C02   | AT24C02 | 24C04   |
| 24C04A                 | 24C08   | 24C16    | 24C32   | 24C64   | 24C128  |
| 24C256                 | 24C512  |          |         |         |         |

### Specifications

- Programmer dimensions : 105mm L x 130mm W x 25mm H
  - Power supply : Input AC 100 to 240V, Output : DC 16V/600mA.
  - Weight : 375 gms
- 1 year limited warranty.

### Software update

Free software updates available via web at [www.ucmicrosys.com](http://www.ucmicrosys.com)

### Programmer Package Contents

Standard package contains the following :

- A programmer
- Serial cable, 10Pin FRC F-F cable for ISP
- An AC adapter
- Installation software CD
- Registration card

### System Requirements

The minimum requirements are as follows:

- A PC, IBM or compatible, desktop or laptop, with one Serial port.
- Win Xp
- CD-ROM driver
- Hard disk of at least 100MB of spare capacity