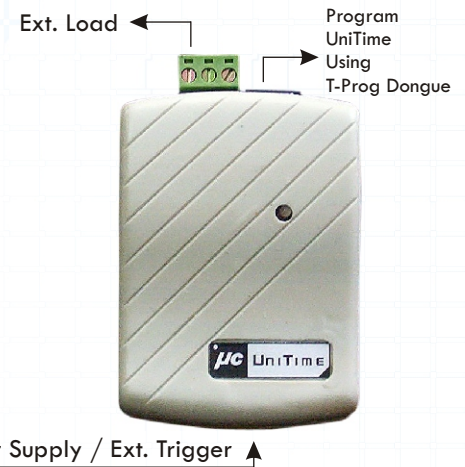
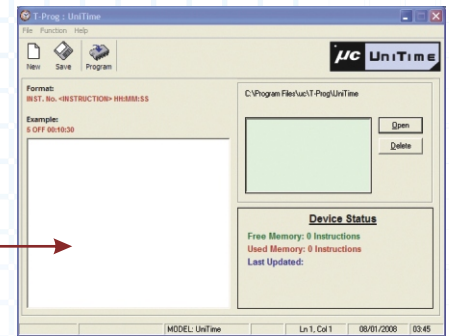


The UniTime® PC Programmable Timer is designed to be an economical and flexible solution for any general-purpose timer application. Setup is quick and easy using T-Prog software. The Timer can be configured to activate once for each trigger or free-run as soon as power is applied.

## Features

- **Operating Modes:**  
One-Shot / Repeat or any other mode upto 1500 lines programmable via PC
- **Time Settings:**  
Min. 1 Sec. to Max. 99 Hr., 99 Min., 99 Sec.
- **Accuracy:**  
15 Sec/Month at 25oC
- **Programming:**  
Via T – Prog Dongle using RS232 serial interface
- **Software:**  
T-Prog
- **Memory:**  
EEPROM protects against loss of memory due to power failure.
- **Ext. Trigger Voltage**  
4.5 - 24VDC
- **Load**  
SPDT Relay Form "C", 7A-24VDC, 3A-220VAC
- **Current**  
40mA DC with Relay on
- 750 lines of ON/OFF Events can be programmed



## Program Sample – Cyclic mode with Ext. trigger

1. ON HH:MM:SS : On for given time
2. OFF HH:MM:SS : Off for given time
3. Trigger : Wait for Ext. Trigger
4. ON HH:MM:SS : On for given time
5. OFF HH:MM:SS : Off for given time
6. GOTO 1 : Cyclic mode

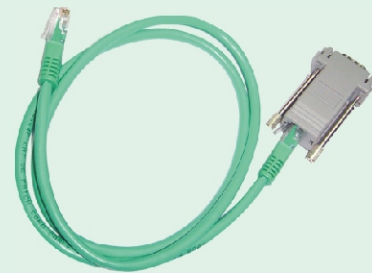
## Specifications

- Dimensions : 85mm L x 60mm W x 25mm H
- Operating Voltage : 12 to 18 Volts AC/DC.  
1 year limited warranty.

## Software

T-Prog software available via web at [www.ucmicrosys.com](http://www.ucmicrosys.com)

## T-Prog Dongle to Program UniTime



## Standard package of T-Prog Dongle contains:

- A T-Prog Dongle
- Serial to RJ45 cable for programming
- T-Prog - Installation software CD

## System Requirements

The minimum requirements are as follows:

- A PC, IBM or compatible, desktop, with one Serial port.
- Win98 SP2/NT/2000/ME/Xp
- CD-ROM driver
- Hard disk of at least 100MB of spare capacity